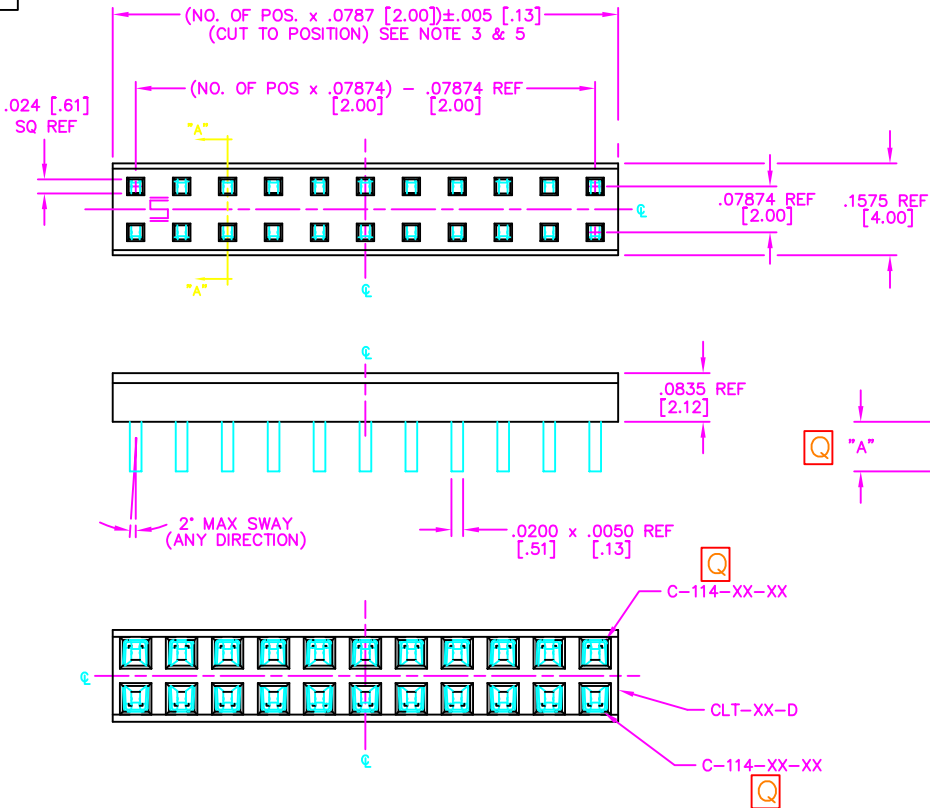


REVISION Q

DIMENSIONS ARE IN INCHES UNLESS OTHERWISE NOTED TOLERANCES ARE:
 ONE PLACE DECIMALS ±.1[2.5] THREE PLACE DECIMALS ±.005[.13] ANGLES ±10°
 TWO PLACE DECIMALS ±.01[.3] FOUR PLACE DECIMALS ±.0020[.051]

TITLE: 2 MM LOW PROFILE SOCKET STRIP
 DWG NO: CLT-1XX-01-XX-D-X
 SHEET 1 OF 1

FIG. 2
 (CLT-111-XX-XX-D-X SHOWN)



CLT-1XX-01-XX-D-X

No. OF POS PER ROW
 -02 THRU -50

LEAD STYLE SPEC.
 -01: THROUGH HOLE (USE C-114-02-XX)
 -03: THROUGH HOLE (USE C-114-03-XX)

OPTION
 -P: PICK & PLACE PAD AVAILABLE ON POSITIONS 04 THRU 50 ONLY (SEE FIG. 2 USE MPP-03)

ROW SPEC.
 -D: DOUBLE ROW

PLATING
 -F: .000003 GOLD IN CONTACT AREA, TIN ON TAIL (POST-PLATE ONLY)
 -L: .000010 GOLD IN CONTACT AREA, TIN ON TAIL (POST-PLATE ONLY)
 -G: .000010 GOLD IN CONTACT AREA, FLASH GOLD ON TAIL (POST-PLATE ONLY)
 -S: .000030 GOLD IN CONTACT AREA, TIN ON TAIL (POST-PLATE ONLY)
 -FM: .000003 GOLD IN CONTACT AREA, MATTE TIN ON TAIL (POST-PLATE ONLY)
 -LM: .000010 GOLD IN CONTACT AREA, MATTE TIN ON TAIL (POST-PLATE ONLY)
 -SM: .000030 GOLD IN CONTACT AREA, MATTE TIN ON TAIL (POST-PLATE ONLY)

* NOT RELEASED FOR PRODUCTION

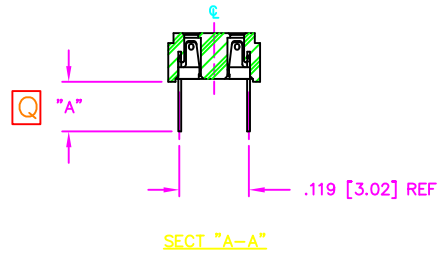
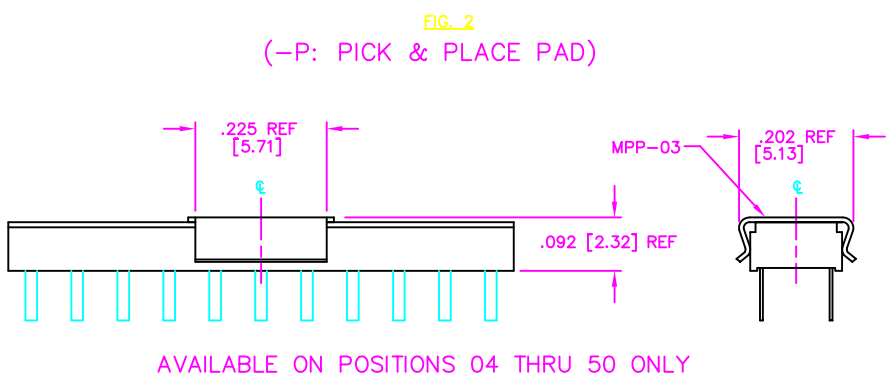
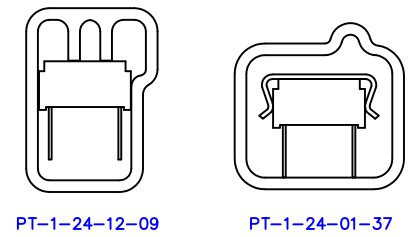


TABLE 2

LEAD STYLE	"A"
-01	.085 [2.16]
-03	.116 [2.95]

TABLE 1

OPTION	TUBE	PLUG
--	PT-1-24-12-09	TP-12
-P	PT-1-24-01-37	TP-24-02



AVAILABLE ON POSITIONS 04 THRU 50 ONLY

PROPRIETARY NOTE
 THIS DOCUMENT CONTAINS INFORMATION CONFIDENTIAL AND PROPRIETARY TO SAMTEC INC. AND SHALL NOT BE REPRODUCED OR TRANSFERRED TO OTHER DOCUMENTS OR DISCLOSED TO OTHERS OR USED FOR ANY PURPOSE OTHER THAN THAT FOR WHICH IT WAS OBTAINED WITHOUT THE EXPRESSED WRITTEN CONSENT OF SAMTEC INC.

- NOTES:
1. MINIMUM PUSHOUT FORCE: .5 LB.
 2. WILL LOSE A POSITION FOR EVERY CUT MADE ON A SOCKET STRIP.
 3. PARTS TO BE SYMMETRICAL ABOUT ϕ .
 4. PACKAGE POSITIONS -04 THRU -50 IN TUBES. LAYER PACKAGE POSITIONS -02 THRU -03.
 5. ENDWALL AFTER CUTTING: .0245±.003 [.622±.08]

PLOT SCALE: 1=.15

EXISPROD\ASSEMBLY\2MM CLT-THAS

samtec

520 PARK EAST BLVD. NEW ALBANY, INDIANA 47150
 PHONE (812) 944-6733 P.O. BOX 1147
 CODE 55322

MADE BY: PURVIS 11-02-95

CLT-1XX-01-XX-D-X
 SHEET 1 OF 1